



01. ABOUT US

Complementary businesses for a global offer



Every year, we carry out several projects in the field of construction in Tunisia and around the world. From the simplest to the most complex, our achievements have been designed and executed in order to meet the needs of clients while taking into account the challenges of sustainable development. This success is the result of our excellent technical performances and the synergy between our different poles of expertise.





Vision

Become a performing MULTINATIONAL firm in Engineering and Construction.



Mission

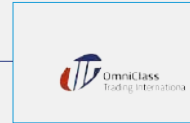
Digitalize all our processes in an attractive environment promoting responsibility, initiative, sharings and collaboration between teams.



Values

Collaboration, Innovation, Transparency and trust, Strong Motivation, Involvement in decision making.

Group Organisation





Our expertises

Construction Management

We bring together all the construction trades in order to manage and carry out your turnkey projects, with complete peace of mind.



Facility Management

We ensure interface BIM with CMMS tools, and we manage the operation and maintenance of your projects



Engineering & Project Management

Our team of experts and qualified engineers manages your study projects and accompanies you from feasibility to work contracts.

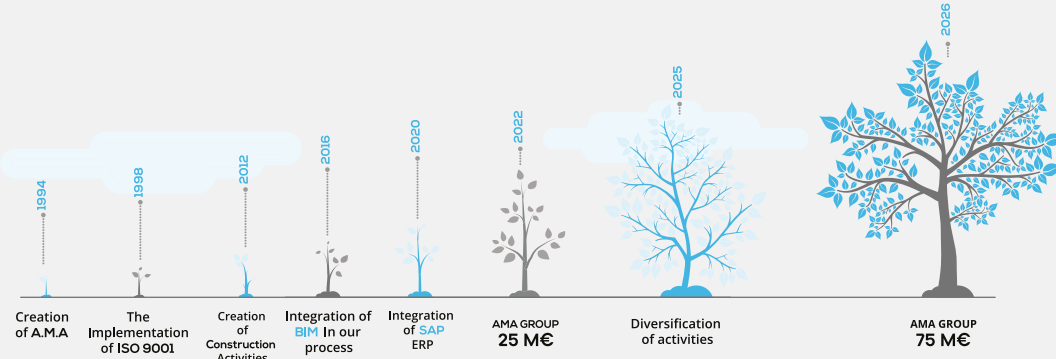


BIM

Beyond BIM processing, we carry out the missions of AMO BIM, BIM Management and technical synthesis.



The Journey Of a Young Seed



100⁺

Engineers and
Managers



Age range
36 Years

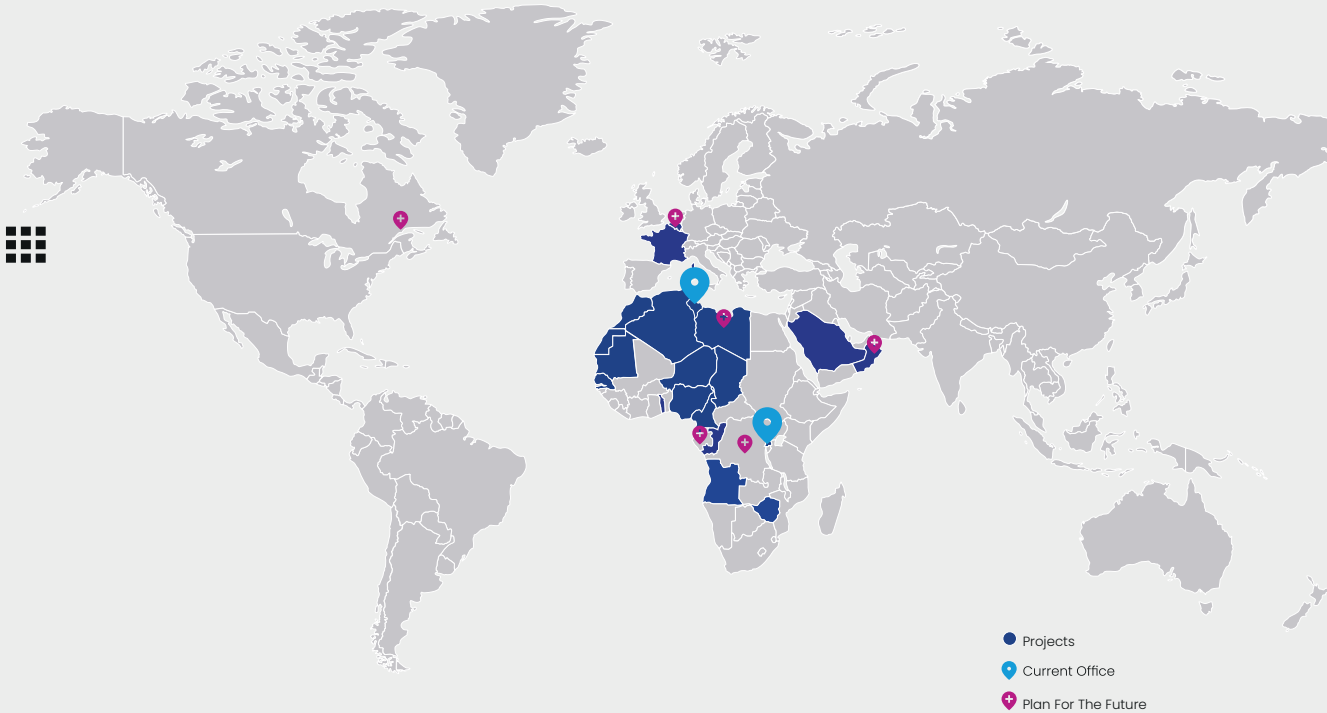


10 certified
PMI engineers

14 certified
CANBIM

Open innovation, Open to the world

OUR GLOBAL OFFICE LOCATIONS



Our experience around the world

The Digital Transition



Digitalization is our key business process in our strategic plan. We are investing in the digital sector, using appropriate tools. This allows us to ensure areas of improvement, in creativity and efficiency.

MEANS OF PRODUCTION



Process BIM

Building Information Modeling

We have integrated BIM into our projects in permanent collaboration with our partners, with the aim of creating a conducive ecosystem to the digital transition.

BIM Academy

AMA GROUP is involved in the training and creates the BIM Academy training program, which is dedicated to AMA employees and construction professionals.



AMA GROUP one of the active members of the organization CanBIM .



Collaboration between ZIGURAT and AMA GROUP will facilitate training and implementation of BIM in Tunisia and other African countries.



AUTODESK
shows our expertise



Our advantages

- ✓ **Highly qualified staff**
- ✓ **Many skills represented by the human resources deployed for each site**
- ✓ **Numerous references (various customers)**
- ✓ **BIM process integrated in all our professions
Large reference list (several types of customers)**
- ✓ **Respect of deadlines**
- ✓ **Competitive costs**



MORE THAN
1000 PROJECTS



RECREATION FACILITY

11 15 00 00

11 15 00 00 - Recreation Facility

HALL OMNISPORTS TUNIS

The construction of a weightlifting and weight training room located in the youth centre el Manzeh, on behalf of the Ministry of Youth and Sports



Planning Disciplines
33-11 00 00

Design Disciplines
33-21 00 00

Research Disciplines
33-23 00 00

Project Management Disciplines
33-25 00 00

Construction Disciplines
33-41 00 00

Facility Use Disciplines
33-55 00 00

Support Disciplines
33-81 00 00

COUNTRY
Tunisia

SURFACE
2200m²

CUSTOMER
Ministry of the
Jeunesse de Sport

YEAR
2019

STATUS
Finished

11 15 00 00 - Recreation Facility

FOOTBALL STADIUM OF BENI KHALLED

The project involves the construction of a municipal football stadium in Beni Khaled on behalf of the Ministry of the Equipment - Nabeul.



Planning Disciplines
33-11 00 00

Design Disciplines
33-21 00 00

Research Disciplines
33-23 00 00

Project Management Disciplines
33-25 00 00

Construction Disciplines
33-41 00 00

Facility Use Disciplines
33-55 00 00

Support Disciplines
33-81 00 00

COUNTRY
Béni Khaled
Tunisia

SURFACE
16 000m²

CUSTOMER
Ministry
of the Equipment

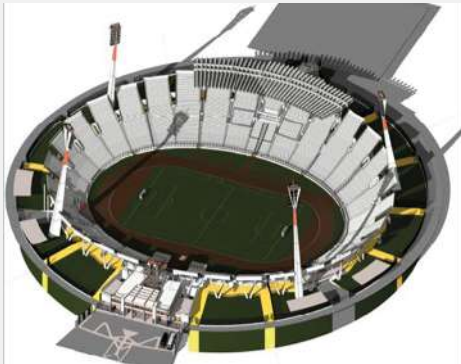
YEAR
2018/2017

STATUTS
Finished

11 15 00 00 - Recreation Facility

FOOTBALL STADIUM OF EL MENZAH

The project includes the rehabilitation project of the El Menzeh Olympic stadium on behalf of the Ministry of Youth, Sport and Professional Integration.



Planning Disciplines
33-11 00 00

Design Disciplines
33-21 00 00

Research Disciplines
33-23 00 00

Project Management Disciplines
33-25 00 00

Construction Disciplines
33-41 00 00

Facility Use Disciplines
33-55 00 00

Support Disciplines
33-81 00 00

COUNTRY
Tunisia

SURFACE
70000m²

CUSTOMER
Ministry of the
Equipment

YEAR
2022

STATUTS
In progress



HEALTH CARE FACILITY

11 21 00 00

11 21 00 00 - Health care facility

PEDIATRIC CLINIC - JARDIN EL MENZAH

The Pediatric Clinic of Tunis is a first order pediatric clinic with a single specialty in Tunis. It provides highly professional pediatric care in surgery, medicine, radiology, emergency 24/7 and resuscitation with quality care and innovation. The Clinic has 18 intensive care beds, 12 day beds, 6 emergency beds and 46 hospital beds. It has 4 operating rooms with 1 sterilization unit and 2 recovery rooms. Her outpatient surgery is an outpatient surgery with 14 beds in her unit.



COUNTRY
Tunisia

SURFACE
30 000m²

CUSTOMER
Pediatric clinic
Jardin el Menzah

YEAR
2020

STATUTS
Finished

Planning Disciplines
33-11 00 00

Design Disciplines
33-21 00 00

Research Disciplines
33-23 00 00

Project Management Disciplines
33-25 00 00

Construction Disciplines
33-41 00 00

Facility Use Disciplines
33-55 00 00

Support Disciplines
33-81 00 00

11 21 00 00 - Health care facility

MEDITERRANEAN CLINIC

Project of a clinic The Mediterranean clinic located at the Soukra - Tunisia , compound a basement, ground floor and 4 floors: Execution study.



Planning Disciplines
33-11 00 00

Design Disciplines
33-21 00 00

Research Disciplines
33-23 00 00

Project Management Disciplines
33-25 00 00

Construction Disciplines
33-41 00 00

Facility Use Disciplines
33-55 00 00

Support Disciplines
33-81 00 00

COUNTRY
Tunisia

SURFACE
8500m²

CUSTOMER
Mediterranean service
company

YEAR
2016 - 2015

STATUTS
Finished

11 21 00 00 - Health care facility

MEDIS CENTRAL LABORATORY

Engineering and supervision works for the laboratory MEDIS unit for one area total of 3,700 m² including 3,250 m² covered and 450 m² of rooms own with 3 floors.



Planning Disciplines
33-11 00 00

Design Disciplines
33-21 00 00

Research Disciplines
33-23 00 00

Project Management Disciplines
33-25 00 00

Construction Disciplines
33-41 00 00

Facility Use Disciplines
33-55 00 00

Support Disciplines
33-81 00 00

COUNTRY
Tunisia

SURFACE
6660m²

CUSTOMER
MEDIS Laboratories

YEAR
2008-2010

STATUTS
Finished

11 21 00 00 - Health care facility

MEDIS SITE 2

Realization of execution studies, and management of the works for the central laboratory MEDIS site 2 for a surface to- area of 9,350 m2 including 8,500 m2 covered and 850 m2 of rooms own with 4 floors.



Planning Disciplines
33-11 00 00

Design Disciplines
33-21 00 00

Research Disciplines
33-23 00 00

Project Management Disciplines
33-25 00 00

Construction Disciplines
33-41 00 00

Facility Use Disciplines
33-55 00 00

Support Disciplines
33-81 00 00



COUNTRY
Tunisia

SURAFACE
9350m²

CUSTOMER
MEDIS Laboratories

YEAR
2014

STATUTS
Finished

11 21 00 00 - Health care facility

MEDIS SITE 3

Realization of execution studies, and supervision of works for a total area of 6,660 m² including 5,200 m² covered and 1 460 m² of clean rooms with 4 floors.



Planning Disciplines
33-11 00 00

Design Disciplines
33-21 00 00

Research Disciplines
33-23 00 00

Project Management Disciplines
33-25 00 00

Construction Disciplines
33-41 00 00

Facility Use Disciplines
33-55 00 00

Support Disciplines
33-81 00 00

COUNTRY
Tunisia

SURFACE
6660m²

CUSTOMER
MEDIS Laboratories

YEAR
2008

STATUTS
Finished



11 21 00 00 - Health care facility

PASTEUR CLINIC IN NORTHERN URBAN CENTER - TUNISIA

Construction of a clinic in the heart of the capital of Tunisia which consists of 8 floors + 2 basements & ground floor.

- Execution study
- Study and monitoring of works



Planning Disciplines
33-11 00 00

Design Disciplines
33-21 00 00

Research Disciplines
33-23 00 00

Project Management Disciplines
33-25 00 00

Construction Disciplines
33-41 00 00

Facility Use Disciplines
33-55 00 00

Support Disciplines
33-81 00 00

COUNTRY
Tunisia

SURFACE
16500m²

CUSTOMER
Nutris Company

YEAR
2013

STATUTS
Finished



LODGING FACILITY

11 25 00 00

11 25 00 00 - Lodging Facility

FEDERATION HOTEL TUNISIAN FOOTBALL

Occupying a surface of 2400 m² this luxurious establishment will include thirty rooms, sixty beds, an audio-visual room, a restaurant, a playground and leisure area for players, a parking lot.



Planning Disciplines
33-11 00 00

Design Disciplines
33-21 00 00

Research Disciplines
33-23 00 00

Project Management Disciplines
33-25 00 00

Construction Disciplines
33-41 00 00

Facility Use Disciplines
33-55 00 00

Support Disciplines
33-81 00 00

COUNTRY
Tunisia

SURFACE
2400m²

CUSTOMER
Tunisian Federation
football

YEAR
2019

STATUTS
Finished

11 25 00 00 - Lodging Facility

HOTEL FIESTA BEACH CLUB IN DJERBA - TUNISIA

Realization of the execution studies, and management of the works for all trades for the construction of a housing and leisure center in Djerba comprising accommodation blocks in R+2, with outdoor swimming pools, a pool house, administration.



Planning Disciplines
33-11 00 00

Design Disciplines
33-21 00 00

Research Disciplines
33-23 00 00

Project Management Disciplines
33-25 00 00

Construction Disciplines
33-41 00 00

Facility Use Disciplines
33-55 00 00

Support Disciplines
33-81 00 00

COUNTRY
Tunisia

SURFACE
12 000m²

CUSTOMER
Real estate company
sunsenior

YEAR
2010-2012

STATUTS
Finished

11 25 00 00 - Lodging Facility

ELBO SUITS CONGO

Elbo Suites is an apartment hotel located in the heart of Brazzaville's business district. Ideally located on the banks of the majestic Congo River, downtown and only 15 minutes from the Maya-Maya International Airport. First HQE building



Planning Disciplines
33-11 00 00

Design Disciplines
33-21 00 00

Research Disciplines
33-23 00 00

Project Management Disciplines
33-25 00 00

Construction Disciplines
33-41 00 00

Facility Use Disciplines
33-55 00 00

Support Disciplines
33-81 00 00

COUNTRY
CONGO

SURFACE
16 000m²

CUSTOMER
Bentsilm

YEAR
2013

STATUTS
Finished



OFFICE FACILITY

11 27 00 00

11 27 00 00- Office Facility

BANK OF THE REPUBLIC OF BURUNDI BUJUMBURA

BRB Bujumbura Headquarters, located in BUJUMBURA, is a turnkey smart building with low energy consumption fully air-conditioned and ventilated. Meeting international standards in banking and fire safety.



Planning Disciplines
33-11 00 00

Design Disciplines
33-21 00 00

Research Disciplines
33-23 00 00

Project Management Disciplines
33-25 00 00

Construction Disciplines
33-41 00 00

Facility Use Disciplines
33-55 00 00

Support Disciplines
33-81 00 00

COUNTRY
Burundi

SURAFACE
36 000m²

CUSTOMER
BRB

YEAR
2019

STATUTS
In progress

11 27 00 00- Office Facility

ALTERNATIVE SITE OF THE BANK OF THE REPUBLIC OF BURUNDI RUMONGE

The alternative site of the Bank of the Republic of Burundi has about fifty offices, a meeting room at each level and residences. In the basement is the vault and counting room while the ground floor houses banking services.



Planning Disciplines
33-11 00 00

Design Disciplines
33-21 00 00

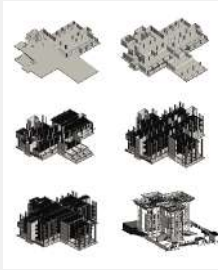
Research Disciplines
33-23 00 00

Project Management Disciplines
33-25 00 00

Construction Disciplines
33-41 00 00

Facility Use Disciplines
33-55 00 00

Support Disciplines
33-81 00 00



COUNTRY
Burundi

SURFACE
6 000m²

CUSTOMER
BRB

YEAR
2016

STATUTS
Finished

11 27 00 00- Office Facility

ATTIJARI HEADQUARTERS REDEVELOPMENT PROJECT INSURANCE ON THE SHORES OF THE LAKE

Conception et dimensionnement d'un élément de facade en structure métallique et Aluminium. Le projet est un immeuble composé d'un R+D, un RDC et un étage sis aux lac 1 Tunis.



Planning Disciplines
33-11 00 00

Design Disciplines
33-21 00 00

Research Disciplines
33-23 00 00

Project Management Disciplines
33-25 00 00

Construction Disciplines
33-41 00 00

Facility Use Disciplines
33-55 00 00

Support Disciplines
33-81 00 00

COUNTRY
Tunisia

SURFACE
6000m²

CUSTOMER
Attijari Insurance

YEAR
2016

STATUTS
Finished

11 27 00 00- Office Facility

BANK OF CENTRAL AFRICAN STATES ABECHE - TCHAD

Bank building Central African states in Abèche - Chad. The project consists of a main building (Basement + ground floor + 3 floors), with an face of 7830 m2 and 9 ancillary premises of a surface total of 1720 m2. The project is located on land of 24,242m2.



Planning Disciplines
33-11 00 00

Design Disciplines
33-21 00 00

Research Disciplines
33-23 00 00

Project Management Disciplines
33-25 00 00

Construction Disciplines
33-41 00 00

Facility Use Disciplines
33-55 00 00

Support Disciplines
33-81 00 00

COUNTRY
Tchad

SURFACE
9550m²

CUSTOMER
Engineering Mosaic

YEAR
2013-2015

STATUTS
Finished

11 27 00 00- Office Facility

BANCOBU BUSINESS CENTER MULTISERVICE COMPLEX

Construction of a «BANCOBU BUSINESS CENTER» multi-service complex in Bujumbura – Burundi. It is a commercial and administrative building with a covered area of 20,000 m². It is the construction of a building for office and commercial use, including a multi-purpose conference room, a gym with swimming pool. It is designed as follows: A basement over the entire surface of the land (57m wide x 95m long)



Planning Disciplines
33-11 00 00

Design Disciplines
33-21 00 00

Research Disciplines
33-23 00 00

Project Management Disciplines
33-25 00 00

Construction Disciplines
33-41 00 00

Facility Use Disciplines
33-55 00 00

Support Disciplines
33-81 00 00

COUNTRY
Burundi

SURFACE
25 000m²

CUSTOMER
Bancobu

YEAR
2020

STATUTS
In progress



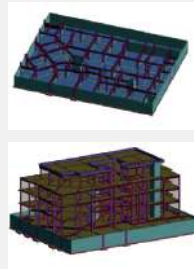
PUBLIC SERVICE FACILITY

11 13 00 00

11 13 00 00 - Public Services Facility

EMBASSY FROM EGYPT TO TUNIS

Construction of the Egyptian embassy on the banks of Lake II in Tunis. The project includes the construction of the Egyptian Embassy superstructure



Planning Disciplines
33-11 00 00

Design Disciplines
33-21 00 00

Research Disciplines
33-23 00 00

Project Management Disciplines
33-25 00 00

Construction Disciplines
33-41 00 00

Facility Use Disciplines
33-55 00 00

Support Disciplines
33-81 00 00

COUNTRY
Tunisia

SURFACE
4000m²

CUSTOMER
Ministry of Foreign
Affairs in Egypt

YEAR
2018

STATUTS
Finished

11 13 00 00 - Public Services Facility

CECADM HEADQUARTERS

Turnkey construction of the headquarters of the Cooperative of Savings and Credit for Self-Development CECADM Bank with all standards of banking security and fire safety.



Planning Disciplines
33-11 00 00

Design Disciplines
33-21 00 00

Research Disciplines
33-23 00 00

Project Management Disciplines
33-25 00 00

Construction Disciplines
33-41 00 00

Facility Use Disciplines
33-55 00 00

Support Disciplines
33-81 00 00



COUNTRY
BURUNDI

SURFACE
6000m²

CUSTOMER
CECADM

YEAR
2020

STATUTS
Finished

11 13 00 00 - Public Services Facility

BURUNDIAN OFFICE OF RECIPES BUJUMBURA

Construction of a twelve-storey building to serve as the headquarters of the OBR located in Quartier KIGOBE SUD, Commune NTAHANGWA - BUJUMBURA. This is an office building with a covered area of approximately 30,000 m². The work consists in building a main building with twelve (12) levels that will serve as the headquarters of the OBR (Office burundais des recettes) for office use, including the basement, auxiliary buildings, the interior and exterior parking, gardening, sodding, fencing and other related work.



Planning Disciplines
33-11 00 00

Design Disciplines
33-21 00 00

Research Disciplines
33-23 00 00

Project Management Disciplines
33-25 00 00

Construction Disciplines
33-41 00 00

Facility Use Disciplines
33-55 00 00

Support Disciplines
33-81 00 00



COUNTRY
Burundi

SURFACE
30 000m²

CUSTOMER
Burundian Office
recipes

YEAR
2020

STATUTS
In progress

11 13 00 00 - Public Services Facility

PRISON REHABILITATION PROJECT MESSADINE

Messaa Prison Rehabilitation- dine as part of the reform judiciary in Tunisia financed by the European Union. The project involves the rehabilitation of existing buildings on an area face of 1000 m2 and new construction



Planning Disciplines
33-11 00 00

Design Disciplines
33-21 00 00

Research Disciplines
33-23 00 00

Project Management Disciplines
33-25 00 00

Facility Use Disciplines
33-55 00 00

Support Disciplines
33-81 00 00

COUNTRY
Tunisia

SURFACE
7000m²

CUSTOMER
GTR

YEAR
2015-2016

STATUTS
Fineshed

11 13 00 00 - Public Services Facility

BUILDINGS AT THE AIR BASE IN REMEDA

Building complex project at the Remada air base with a total area of 4100 m²:

Containing a total of 9 blocks:

- 7 buildings (accommodation, administration, catering, technical room)
- substation under electrical station (transformation station + generator + delivery station)
- car service hangar block in metal fram
- masonry fence work 600mLe



Planning Disciplines
33-11 00 00

Design Disciplines
33-21 00 00

Research Disciplines
33-23 00 00

Project Management Disciplines
33-25 00 00

Construction Disciplines
33-41 00 00

Facility Use Disciplines
33-55 00 00

Support Disciplines
33-81 00 00

COUNTRY
Tunisia

SURFACE
4100 m²

CUSTOMER
ministry of defense

YEAR
2021

STATUTS
In progress



11 13 00 00 - Public Services Facility

HEADQUARTERS OF ETAP AVENUE MOHAMED V

project presents itself in the Construction of an office building of area of 2000 m2 composed of with 8 floors and two basements on pro- found.



Planning Disciplines
33-11 00 00

Design Disciplines
33-21 00 00

Research Disciplines
33-23 00 00

**Project Management Disciplines
33-25 00 00**

Construction Disciplines
33-41 00 00

Facility Use Disciplines
33-55 00 00

Support Disciplines
33-81 00 00

COUNTRY
Tunisia

SURFACE
2000m²

CUSTOMER
SOCIETE IMMOBILIERE
EL MUSHRIQUAH

YEAR
2012

STATUTS
Finished

11 13 00 00 - Public Services Facility

CONSTRUCTION OF A SPAZIO BUILDING IN NANTERRE FRANCE

Construction works of a building with twelve levels which will serve as the headquarters of the OBR located in Quartier KIGOBE SUD, *Commune NTAHANGWA – BUJUMBURA



Planning Disciplines
33-11 00 00

Design Disciplines
33-21 00 00

Research Disciplines
33-23 00 00

Project Management Disciplines
33-25 00 00

Construction Disciplines
33-41 00 00

Facility Use Disciplines
33-55 00 00

Support Disciplines
33-81 00 00

COUNTRY
France

SURFACE
80 000m²

CUSTOMER
AD structures

YEAR
2006

STATUTS
Finished



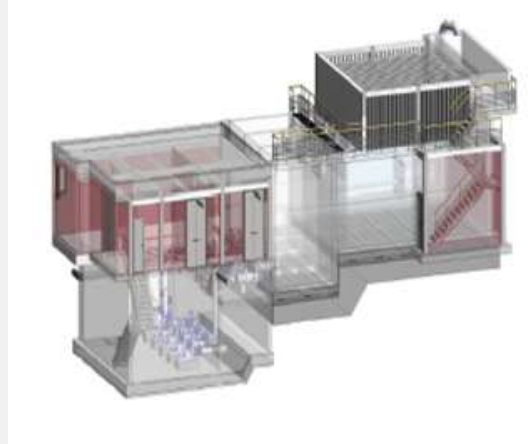
WATER INFRASTRUCTURE FACILITY

11 41 00 00

11 41 00 00 - Water Infrastructure Facility

IRON REMOVAL STATION IN KASSERINE

Lot 1: Civil engineering works. Civil engineering works for the construction of the iron removal station, the pumping station Lot 2: Hydro-electromechanical equipment Pumping station for produced water and filter washing water Bleaching equipment for the iron removal station and the existing tank



Planning Disciplines
33-11 00 00

Design Disciplines
33-21 00 00

Research Disciplines
33-23 00 00

Project Management Disciplines
33-25 00 00

Construction Disciplines
33-41 00 00

Facility Use Disciplines
33-55 00 00

Support Disciplines
33-81 00 00

COUNTRY
Tunisia

SURFACE
2000m²

CUSTOMER
SONEDE

YEAR
2021

STATUTS
Finessed



Headquarters



+216 71 782 588 / +216 71 782 661



contact@amagroup.tn



No. 1 Mohamed Moaala Street
Mutuelleville 1082 Tunis - TUNISIA

